

The Balladeer

Monthly newsletter of Acoustic Routes, Wellington's folk music club

Acoustic  *Routes*

www.acousticroutes.org.nz

March 2023: In this issue

1. AR monthly concert featuring Enda Kenny with Caoimhe Lane, Roseneath School Hall, Thursday 23 March, 7:30 pm
2. Open Mic at Plimmerton Boating Club, Wednesday 8 March, 7 pm
3. Open Mic at The Office, Newtown, Sundays 12 & 26 March, 5:15 – 8pm
4. AR monthly singaround, Johnsonville Community Hub, Monday 20 March, 7:30 pm
5. From the Committee
6. Review of the AR February concert featuring South for Winter, with Luca Joass and Beans
7. Balladeer Music Noticeboard
8. Want to perform?
9. About Acoustic Routes
10. Acoustic Routes contacts
11. Other regular folk events/contacts in the region

This newsletter can be printed out from a pdf located on the website

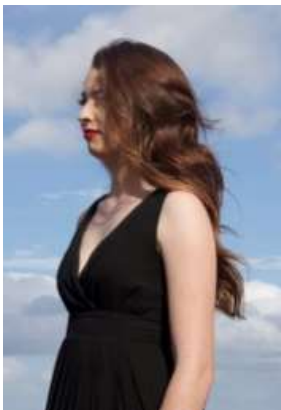
<http://acousticroutes.org.nz/news/the-balladeer/>

1. AR monthly concert featuring Enda Kenny, with Caoimhe Lane, Roseneath School Hall, 7.30pm, Thursday 23rd March

Enda Kenny is an Irish-born songwriter who has made his home in Australia since the late 1980's. His thoughtful, descriptive stories of his adopted homeland have struck a chord with festival audiences here and beyond. His songs are always memorable and spiced with plenty of humour.

After a decade of juggling performance with a career in Public Housing, Enda returned to full-time music with the release of *Kitchen Ballads* in 2019. After the interval (COVID) he is happily back on the road.

Described by *Rock and Reel* as 'a cracking live entertainer', and by Colum Sands as 'the finest Irish songwriter living overseas'.



Caoimhe Lane is a young Wellington based singer and guitarist who performs contemporary and traditional acoustic folk music. After completing a music degree majoring in jazz performance at the University of Auckland, she is studying composition at the New Zealand School of Music in Wellington. She was a winner in last year's Acoustic Routes' Joan Prior Young Performers Award.

Caoimhe performs her own songs as well as traditional songs. In her music she seeks to explore her Celtic roots given to her by her Irish mother and bring the joy that she exudes throughout life into her songs.

Entry: \$20/\$15 for members. Cash only (no eftpos facilities).

2. Open Mic, Plimmerton Boating Club, 10 Moana Road Plimmerton, Wednesday 8 March, 7pm

To help support the Plimmerton Boating Club, the open mic is now the second Wednesday of the month.

Spread the word.

Same Ole MC.
Roy McGuinness 021433878



3. Newtown Open Mic upstairs at The Office, Sundays 12 & 26 March, 5:15 - 8 pm



Newtown Acoustic Sound's "Open Mic", upstairs at The Office Bar in Riddiford Street, Newtown.

Contact: kevin.ikin@supermail.co.nz, or newtownacousticsound@gmail.com

4. AR monthly singaround, Rimu Room, Johnsonville Community Hub, 33 Johnsonville Road, Monday 20 March, 7:30 pm

Bring songs, tunes or poems to share, or just come to join in. Go into the main room and the Rimu room is on the left. Note the address of the Community Hub.

Tea and coffee provided. Entry \$4. Now confirmed for the 3rd Monday of every month.



5. From the Committee

Kia ora tatou

Events

We're really pleased, and are sure you are too, to see more overseas artists travelling again. It was great to see South for Winter breeze through in February, supported by two top-notch local artists, Luca Joass and Beans. This month we're very excited to welcome back an 'old' favourite, Enda Kenny. Make sure you put that in your diaries!

We remain committed to providing opportunities for local musicians to perform, play together, and develop, which we do through our two open mike sessions and the new singaround session in Johnsonville. Overseas artists bring inspiration and invigoration to the local scene, so we take advantage of those opportunities as they arise.

Performers Register

Ruth is refreshing the performers register we use to help select support acts for the main concerts. If you think we may not know about you and you'd like to be on the list, do get in touch. Performers need to be able to do a set of 5-6 numbers.

Supper Roster

As you know, supper is provided at half time during our concerts, in the form of tea, coffee and biscuits. We've been talking about reinstating the roster for tea duties. It doesn't take much these days – just putting out the cups and supplies, making sure

there's water boiled, and whisking everything away afterwards. (We even take the cups home to wash in the dishwasher, so there's not much cleaning up needed.) If helping with supper appeals to you, either managing a roster or being on the list to help from time to time, we'd love to hear from you. You get into the concert free and it could be good way to get to know more people in the club.

Venues

Our current venue, Roseneath School Hall, has served us well for a while now, but it has a few disadvantages. If you know of venues in or around Wellington that might suit our needs better, either regularly or on odd occasions, do send us the details including the reasons they'd be a good fit for us.

Tell Us Your Thoughts

Please respond by email about these, or your ideas, to Ruth Birnie.

president@acousticroutes.org.nz See you soon at an Acoustic Routes event near you!

Ngā mihi mahana, your committee

6. Review of the AR February concert featuring South for Winter, with Luca Joass and Beans

If it did nothing else, this month's concert showed without doubt that songwriting is alive and well in Wellington city! It also demonstrated that we have some great guitarists and singers in our midst. The main act, South for Winter, had some hard acts to follow when they did their set.

All three acts featured songs that were lyrical, humorous, thought-provoking and performed with excellent instrumental backing. From his opening number, Luca Joass, a very gracious and graceful performer with a lovely rolling guitar style, had me willing to follow in his footsteps until "they lead me back to you." His song "Playing grown-up", about being terrified of sitting at a desk all your life, had quite some resonance for me, and I enjoyed the disrupted clichés in the Cinderella shoes song.

Beans is also one for disruption in their songs, and also has a lovely guitar style. They mix simple images like having "a hundred words for rain but only one for love", and hands "reaching out under the table to find yours", with words like irrevocably and breathalyser – who knew those words belonged in a song? Even spell check was a bit perplexed! And who could fail to be moved by the beautiful "I don't live here anymore"? I liked the "anti-co-dependency" attitude of "The dancing song" the first time I heard it at Moon last year, and it was good to hear it again.

South for Winter promised songs "intoned with a depth of emotion and richness of experience that invites listeners into the story", and they delivered a baker's dozen of them. Some thought-provoking, born out of their own experiences, like "All we have" and a new one, "The mountains you've moved" from Dani's day job as a nurse in ICU, and some with a historical theme, like "Ten black crows" and "Underneath the blood moon" – they both have voices with wide ranges that blend well and they perform with energy and enjoyment of each other and the music they make together. I think "Twine" was the pick of the bunch for me, rich with imagery and metaphor. An international duo, talented instrumentalists and singers, drawing on their two countries and love of the natural world for inspiration.

Janette Munneke

7. Balladeer music noticeboard

Where you can advertise your music-related items—lessons, instruments, gigs, band members wanted, etc.

a) Songwriters Showcase at the Moon Bar, 167 Riddiford Street Newtown Sunday 19 March, 7 pm

Featuring Charlotte Yates, Ingrid Saker, and REID.
Doors open from 6pm, music from 7pm, door charge \$10

Contact: Don Mackay 6021songs@gmail.com

b) Up Close & Personal Plimmerton presents Alan Downes, 21 Gordon Road Saturday 25 March, 7:30 pm



Alan's songs are tales of growing up in back country. He tells of the men who came home from wars and the women who worked the land alongside them. He captures the hard times and the optimism. The songs form a narrative of our home, our country and our place in the world. They are (mostly) true stories of people and places told with careful observation, a good dollop of humour and a little nostalgia.

He shares a conversation with the audience about the stories behind the songs, interpreting tales he heard as a child from the perspective of an adult. Be prepared to laugh and maybe shed a tear as Alan takes you on a journey through Aotearoa New Zealand.

Join us anytime from 6:30 pm. Tickets are \$15:00 each. BYO drinks and a small plate for supper.

8. Want to perform?

The AR Committee would like to hear from you if you are interested in performing at our events, including support acts for our monthly concerts. Contact us at performers@acousticroutes.org.nz.



9. About AcousticRoutes

Acoustic Routes (Wellington Folk Centre Incorporated) is a club for people who enjoy playing and listening to folk and acoustic styles of music.

The fourth Thursday of the month generally features a concert, usually with a visiting artist and support acts from amongst our membership. Check the website or the Balladeer for updates about the venue.

Members get priority access to performance opportunities and can have input into the club's activities. To join, email treasurer@acousticroutes.org.nz.

Acoustic Routes publishes this newsletter (The Balladeer) at the start of every month, and also an acoustic gig guide for the Wellington region (Acoustic Routes update). You can [subscribe online](#), or contact publicity@acousticroutes.org.nz.

10. Acoustic Routes contacts

President: Ruth Birnie president@acousticroutes.org.nz

Correspondence: Kevin Ikin secretary@acousticroutes.org.nz

Treasurer/Membership: Peter Whiting treasurer@acousticroutes.org.nz

Balladeer: editor Philippa Boy

balladeer@acousticroutes.org.nz

Acoustic Routes update email: Kevin Ikin secretary@acousticroutes.org.nz

Performance opportunities: performers@acousticroutes.org.nz

Postal address: PO Box 27-191 Marion Square, Wellington, New Zealand.

Website: www.acousticroutes.org.nz

11. Other regular folk events/contacts in the region – please check websites or email for updates

Trad Singing Session with Dave Barnes hosting

When: 2nd and 4th Monday of the month, from about 6.45pm

Where: The Welsh Dragon Bar, Wellington. This session celebrates unaccompanied singing in traditional style. Fine beer and food to be had at the bar.

Contact: Dave Barnes david.barnes@xtra.co.nz

Ceol Alba Scottish Music Club

When: 4th Friday of the month, 7.30 - 9.30pm. A club for playing and/or listening to (mostly) traditional Scottish music. Sheet music supplied or downloadable

Where: Lower Hutt.

Cost: \$5 per night

Contact: Lynne Scott, 04 565 0164 lynne@scott.gen.nz

Levin Folk Music Club

When: 2nd Friday of month, 7.30 pm, blackboard concert plus guest artist.

Entry: Members \$5, Non-Members \$10, Children \$3 (includes supper)

Club Night: 4th Friday of month, 7.30 pm \$2 Koha.

Where: Horowhenua Scottish Society Hall, cnr Bartholomew Rd and Middlesex St.

Website: www.levin-folk-music-club.org.nz

Mainly Acoustic Music Club

When: (Mostly) every 2nd Tuesday of the month, 7.30pm

Where: Mayfair Cafe, 116 Main Street, Upper Hutt

Contact: Mary Khalil 021 02314505 mary.khalil@xtra.co.nz

Club committee email: info@mainlyacoustic.co.nz

Website: <http://mainlyacoustic.co.nz/coming-attractions/>

Morris dancing

Contact: Dave Barnes <http://www.morrisdancing.org.nz/>

Pukerua Bay Folk Club

When: 1st Thursday of the month, 8pm (no club night in January)

Where: 9 Donlin Rd, Pukerua Bay

Contact: Murray or Julie Kilpatrick, (04) 239 9951, musicianmurray@gmail.com

Wellington Bluegrass Society

When: 3rd Friday of the month, 8pm

Where: 54 Richmond Street, Petone

Contact: Andrew Bicknell, (04) 477 0069, bluegrass@xtra.co.nz
<http://wellingtonbluegrass.net.nz/>

Wellington Scottish Fiddle Club

When: Varies, but mostly monthly around the first Sunday

Where: Depends on who is hosting it this time! A club for learning tunes in the traditional "by ear" style, it welcomes fiddlers of all levels.

Cost: Mostly free

Contact: Iain Matcham 04 568 8635, email iain@jumbletree.com