

The Balladeer

Monthly newsletter of Acoustic Routes, Wellington's folk music club

Acoustic  *Routes*

www.acousticroutes.org.nz

For your diary:

*Acoustic Routes AGM, Sunday 19 August, 2pm
Upstairs at the Sprig and Fern, 342 Tinakori Road, Thorndon*

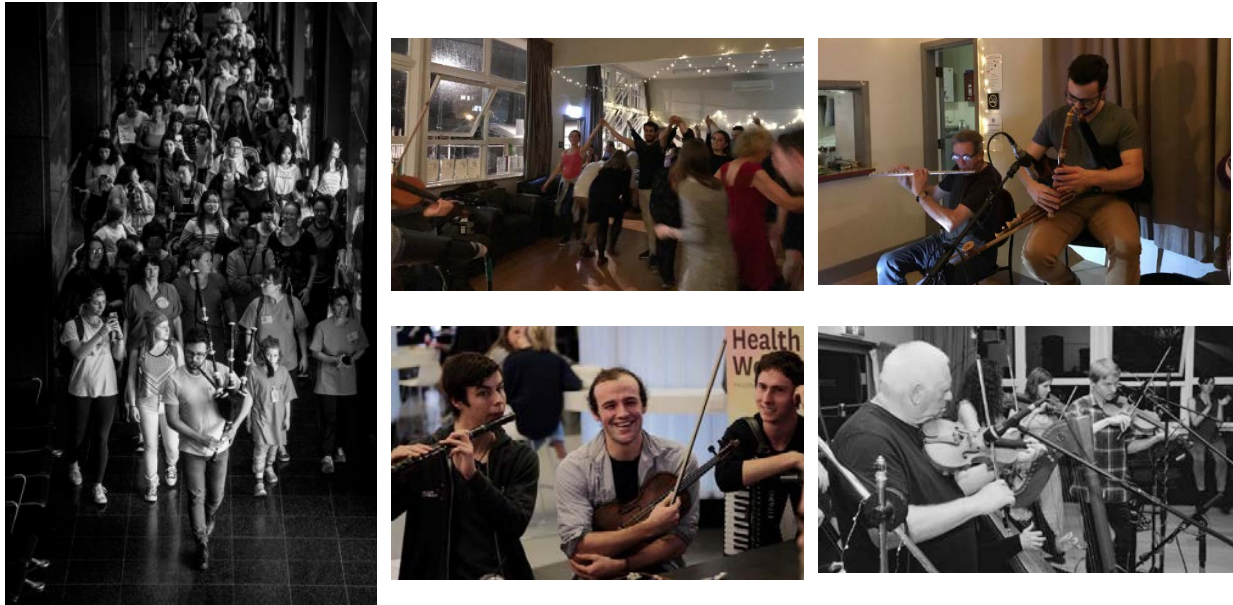
July 2018: in this issue

1. AR welcomes Vic Folk, Roseneath School Hall, Thursday 26 July, 730 pm
2. President Murray's Musings
3. Open Mic Upstairs at The Office, Newtown, Sunday 8 July, 530-8 pm
4. Open Mic, Plimmerton Boating Club, 66 Moana Road, Plimmerton, Thursday 12 July, 7 pm
5. Pat Higgins' alternative guitar tunings workshop, Upstairs at The Office, Newtown, Sunday 22 July, 530-8 pm
6. Riverslea Retreat, Otaki Gorge Road, 25-27 August
7. Review, AR June concert: Janet Muggerridge and Dave Murphy; Dodgers and Deserters
8. Preliminary Treasurers Report
9. Acoustic Routes membership 2018-19
10. Balladeer music noticeboard
11. Want to perform?
12. About Acoustic Routes
13. Acoustic Routes contacts
14. Other regular folk events/contacts in the region

This newsletter can be printed out from a pdf located on the website <http://acousticroutes.org.nz/news/the-balladeer/>

1. Vic Folk, Roseneath School Hall, Thursday 26 July, 730 pm

Acoustic Routes is delighted to welcome our guests this month. A wonderfully vibrant addition to the Wellington folk scene, Vic Folk got started in early 2017 with a St Patrick's Day ceilidh in the Aro Valley Community Centre. It's based on student membership at Victoria University, but welcomes participation from anyone who's interested and offers all kinds of opportunities to learn, play and dance to traditional Celtic music.



In April this year, they played for International Dance Day at Te Papa where they had about two hundred people up and dancing in the second floor foyer!

https://www.youtube.com/watch?v=lwAo3A_RO8I

Vic Folk has mostly been about playing for dances, as well as informal music-making in sessions, so they see this concert as a chance to polish some of that material up for performance and offer some of the lift and excitement that they like to bring to their ceilidhs.

Check out their website, here:

www.vicfolkmusic.wordpress.com

Ticket price: \$15 (non-members) and \$10 (members)

2. President Murray's Musings



Hi Folkies. We are just past the shortest day. Mid-winter cold, rain - brrrr. But Wellington seems to be alive with all kinds of music and other forms of entertainment.

Acoustic Routes held a wonderful concert in the Roseneath School Hall on Thursday the 21st. In particular, I was captivated by Marie Russell's 'Dodgers and Deserters' presentation about the experiences of Kiwi conscientious objectors during the two major world wars. What a wonderful and informative half hour – see my review below.

As we head towards the AGM, I would like again to thank our very hard-working committee. Sue Ikin keeps all our accounts, and me, totally in order. Madeleine always ensures that we have a lovely supper. Kevin is our secretary, but has long been much more than that. He ensures that everything runs really smoothly in more ways than I can mention. This month, Bruce Carey joined our happy crew. Bruce has already been wonderful to work with in so many ways. A really supportive team member, right from the start. Thanks Bruce, I'm very grateful. I must also thank Philippa who produces such a wonderful Balladeer every month. It's a lot of hard work behind the scenes. Thanks so much Philippa. Lastly I want to thank you, who come out on cold nights to support the events that we stage. Without you, our club would be meaningless.

Acoustic Routes will hold its AGM on Sunday on 19th August starting at 2pm, in the upstairs room of the Sprig and Fern in Thorndon. We would love as many of you as possible to come to the AGM and tell us what you want from the club. I am willing to stand again for President and would love to build a larger team of willing souls to expand our club and venture in some new directions.

Some sad news. I recently noticed the passing of John Hayday in Auckland. Although I didn't know John personally I greatly admired him as a musician, singer and performer. He was the one who introduced the NZ folk scene to the songs of Ralph McTell, before Streets of London became popular. He was an exceptionally talented and able man.

Kevin reports that the Open Mics upstairs at the Office are in good heart, drawing a surprising pool of talented and able performers. Thanks so much for all the work you do with this Kevin.

And a special treat at the Office this month for the guitarists among you. On the 22nd starting at 530, Pat Higgins will be presenting a workshop on playing guitar in alternative tunings. Thanks so much Pat.

Roy's Plimmerton Open Mic also continues to attract substantial numbers and very talented performers and listeners every month. Thanks Roy for your hard work and our grandson Dominic for doing sound.

Venues. The Roseneath School hall serves us very well as a concert venue and the upstairs room at the Office serves us well of our Open Mic's, as well as the occasional workshop. However, I am constantly on the look for an alternative venue. Preferably something that we can use whenever we like- no hassles,

minimal cost, make it our own, concert and sing around, workshop and other, friendly, no liquor license problems for minors, close to public transport, easy parking, not too far away from central Wellington. Okay, that's my impossible list. There are a lot of you out there. If you know of any possible venues, that might meet just some of these wishes, then please get in contact with me musicianmurray@gmail.com.

Cheers and happy folking

Murray Kilpatrick

3. Open Mic Upstairs at 'The Office', Newtown, Sunday 8 July and Sunday 29 July, 530-8 pm



AR open mic Sunday the 8th is a friendly wee open mic in a music-friendly space. Contact: Kevin Ikin (021) 167-0823; kevin.ikin@supermail.co.nz

Then Sunday 29th with Newtown Acoustic Sound. The last few sessions have been fantastic. Lots of talent and variety. Thanks to all those making our Sunday evenings a treat. Contact: newtownacousticsound@gmail.com

4. Open Mic, Plimmerton Boating Club, 66 Moana Road, Plimmerton, Thursday 12 July, 7 pm

A highly popular monthly event in a lovely venue. Low cost drinks and food, and a sound system. Contact: Roy on (021) 433-878.



5. Pat Higgins alternative guitar tunings workshop, Upstairs at The Office, Newtown, Sunday 22 July, 530-8 pm



Pat is an extremely competent and creative musician, who has an extensive knowledge of many of these tunings and how to use them. He has very generously offered to share his knowledge to help other musicians, so that they may, enhance their guitar playing and grow.

This will be an interactive workshop, so bring along your guitar and maybe something to write notes on and with. This is a wonderful and rare opportunity which could well be an epiphany for many of us - thanks so much Pat.

6. Riverslea Retreat, Otaki Gorge Road, 25-27 August



The Riverslea Retreat is an annual highlight of the Acoustic Routes calendar. A great opportunity to drive away the winter blues with warm company and wonderful music.

Located on the Otaki Gorge Road, Riverslea can accommodate up to 37 people, including people with disabilities and mobility problems.

Tea, coffee and milo are provided and there will be a shared meal on Saturday night. Pillow, pillow case and bottom sheet are provided on the bunks.

Charges are \$55 per night and \$25 for a day visitor. Please contact Anne McGregor to register: annemcgregor@xtra.co.nz or (04) 2338567.

7. Review, AR June concert: Janet Muggeridge and Dave Murphy; Dodgers and Deserters

Last Thursday, we were treated to a wonderful Acoustic Routes concert in the Roseneath School Hall.

The main act, Janet Muggeridge and Dave Murphy exceeded our already high expectations. Great guitar playing from Dave and some wonderful mandolin harmony and breaks from Janet. Smooth, lovely singing with great harmonies.



The first half was truly a revelation. Marie Russell has formed a group called Dodgers and Deserters with her very talented daughter Anne, who has a gorgeous voice, our AR Secretary Kevin Ikin, and a man with an imposing presence and voice, Garry Smith. With images projected onto the wall behind them, they delivered a compelling thirty minutes of narration and original songs about the experiences of conscientious objectors in New Zealand during the two major world wars. Marie, who wrote most of the songs, narrated wonderfully between the songs, which were extremely varied and well crafted. Really creative arrangements that involved wonderful harmonies, singing and instrumental work. A wonderful, clearly presented piece of very relevant and important New Zealand social history. I really do think that this presentation should tour the country, not just in folk clubs.

Murray Kilpatrick

8. Preliminary Treasurer's Report for 2018

The essential operating costs (PO Box, insurance and accountancy) came to \$1369. Paid in memberships and donations amounted to \$1382, so membership and donations just covered the essential costs.

It's a bit of a different story when it comes to concerts. Despite paying modest fees to performers and increasing the number of totally participatory events there'll be a loss of around \$300. The club is indebted to Klezmer Rebs for bringing their supporters out to make their concert last year an enormous success, both musically and financially. Without that concert the loss on activities would have been in the region of \$900. It also has to be noted that some club members who performed during the year handed their fees back (which have been recorded as donations).

These are preliminary figures only but I don't expect much change when the accounts are reviewed.

A dictionary definition of a club is people who come together for a common cause or purpose. WFC's constitution says that one of its objectives to provide opportunities for musicians to perform in concerts. It has become increasingly obvious that concerts are not what the members want, so I'm repeating Murray's call. Come to the AGM and tell us what YOU want.

Memberships are due for the new financial year and the form is included below. In order to cut costs further, no membership cards will be issued, so please, when you pay, email treasurer@acousticroutes.org.nz so that your membership number can be sent back to you. Life members will just keep last year's number.

Sue Ikin

9. Acoustic Routes membership, July 1, 2018 – June 30, 2019

Subs

Single	\$25.00
Double/family (children under 18)	*\$40.00
Other (Student, life member partners, beneficiaries)	*\$15.00

Where one person is over 65 and the other is under the membership is *\$40.
Where both parties are over 65, or receive benefits the membership is *\$30

What being a member gives you

An annual programme of concerts by top-class musicians
Regular performance opportunities at a range of other musical events
Regular communications about what's on
Discounted entry to club events and concerts
Discounted entry to participating folk clubs
Discounts on selected items at Alistair's Music, Cuba Street
Voting rights at the AGM or any subsequent SGM

Payment options

Complete this form and post it with a cheque made out to Wellington Folk Centre, P.O. Box 27-191 Marion Square WELLINGTON 6141
Pay by internet banking to 'Wellington Folk Centre Inc.': ANZ account 01 0505 0182241 00 (*ensure your name is included for reference*) and simultaneously forward your details (as below) to treasurer@acousticroutes.org.nz .
Hand your form plus payment to a committee member at an Acoustic Routes event.

.....
PLEASE COMPLETE: many thanks for your support

Amount paid: \$ _____ Choose one: Single, Double /Family, Other
Donation: \$ _____ (Wellington Folk Centre is a registered charity and donations of \$5.00 or more are tax-deductible. A receipt will be issued.)
Payment has been made by cheque/direct credit/other
NAME(S): _____

POSTAL ADDRESS: _____

POSTCODE: _____ Phone number _____

YOUR CURRENT E-MAIL ADDRESS: _____

10. Balladeer music noticeboard

Where you can advertise your music-related items—lessons, instruments, gigs, band members wanted, etc.

a) Trad Singing Session, Upstairs at the Sprig and Fern, Thorndon, Monday 9 July, 6:30 pm

With Dave Barnes hosting, this session celebrates unaccompanied singing in traditional style. Fine beer and food to be had at the bar. Contact: Dave Barnes david.barnes@xtra.co.nz

b) Paekakariki open mic, St Peter's Hall, Beach Rd, Paekakariki, 20 July, 730 pm



Paekakariki Non-Profit Music Collective presents this new event, featuring talent from Paekakariki, the Kapiti and Wellington regions and much, much further off... Musicians and singers – all welcome! Sign up at the door to perform, or just come and listen. Sound system available.



Admission by koha - please be generous!

Info from tonyfuell@gmail.com or 021 0231 9547

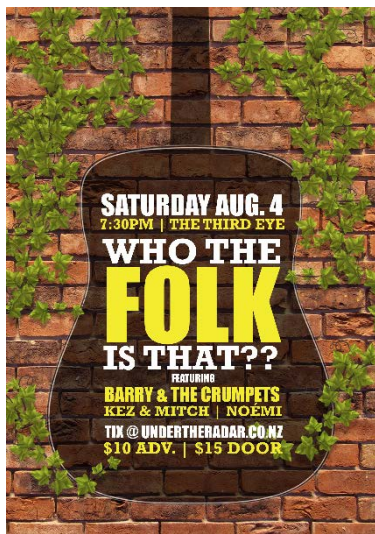
c) PJs and Caboodle, Plimmerton Up Close and Personal Concert, Saturday 21 July, 730 pm

The PJs are wonderful combined voices in a somewhat feisty duo of Pamela Nunn and Jenny Kilpatrick. For a gorgeous contrast, you then have the beautiful trad singing of Diana Bastion with the elegant guitar of Julian Ward. Arrive from 6:30 to mix & mingle with concert starting at 7.30.

BYO drinks and small plate to share for supper. \$10.00.

Contact Anne – 0274599376 annemcgregor@xtra.co.nz

d) Who the Folk is That? The Third Eye, Wellington, Saturday 4 August, 730 pm



Another exciting new folk initiative in Wellington, organised by the next generation.

tix@undertheradar.co.nz

\$10 advanced, \$15 at the door

e) **Want to review for the Balladeer?**

We have a handful of willing writers who regularly get shoulder tapped to review AR concerts and we are very grateful to them. The AR committee offers a free concert ticket to anyone who reviews a concert for the Balladeer. It is great to hear a range of voices and opinions, so if you are interested please contact Philippa balladeer@acousticroutes.org.nz

11. Want to perform?



AR Committee would like to hear from you if you are interested in performing at our events, including support acts for our monthly concerts. Contact us performers@acousticroutes.org.nz

12. About Acoustic Routes

Acoustic Routes (Wellington Folk Centre Incorporated) is a club for people who enjoy playing and listening to folk and acoustic styles of music.

The fourth Thursday of the month generally features a concert, usually with a visiting artist and support acts from amongst our membership. Check the website or the Balladeer for updates about the venue.

Membership of Acoustic Routes costs \$25 a year for individuals, \$40 for couples or families, or \$15 for students and beneficiaries – and as we're now into the second half of the financial year, all membership rates are half price to join from now until June 2017. Membership entitles you to door-charge discounts at Acoustic Routes events, at events put on by most other folk clubs, and at Alistair's Music.

Members get priority access to performance opportunities, and can have input into the club's activities. To join, email treasurer@acousticroutes.org.nz.

Acoustic Routes publishes this newsletter (The Balladeer) at the start of every month, and also an acoustic gig guide for the Wellington region (Acoustic Routes update). You can [subscribe online](#), or contact publicity@acousticroutes.org.nz

13. Acoustic Routes contacts

President: Murray Kilpatrick musicianmurray@gmail.com

Correspondence: Kevin Ikin secretary@acousticroutes.org.nz

Treasurer/Membership: Sue Ikin

treasurer@acousticroutes.org.nz

Balladeer: Philippa Boy
balladeer@acousticroutes.org.nz

Acoustic Routes update email: Murray
Kilpatrick musicianmurray@gmail.com

Performance opportunities: performers@acousticroutes.org.nz

Postal address: PO Box 27-191 Marion Square, Wellington, New Zealand.

Website: www.acousticroutes.org.nz

14. Other regular folk events/contacts in the region

Ceol Alba Scottish Music Club

When: 4th Friday of month, 7.30 - 9.30pm. A club for playing and/or listening to (mostly) traditional Scottish music. Sheet music supplied or downloadable.

Where: Lower Hutt.

Cost: \$5 per night

Contact: Lynne Scott, 04 565 0164 lynne@scott.gen.nz

International Folkdancing

When: Every Wednesday from February to December, 7.30 to 9.15 pm
Where: Tarrant Dance Studios, 125 Cuba St, Wellington

Contact: Cashy Yates (04) 569 1618 cashy@ihug.co.nz

Kapiti Live Music Club

When: 2nd Wednesday of the month, an acoustic social evening for listening and/or singing and playing, from 7:30.

Where: Paul and Kimbra's; 3 Jade Lane, Paraparaumu. Off the east end Mazengarb Road as it changes name and turns toward Kapiti Road.

Contact: enquiry@klmc.org.nz or <http://www.klmc.org.nz>

Kelburn Pub Live Music

When: Live music every Sunday 3-5pm.

Sunday Roots on the first Sunday of each Month, 4-7pm. Hosted by Pip Payne and featuring a different guest artist each month. Details: 'Sunday roots' on Facebook. Contact the Pub if you are interested in performing.

Levin Folk Club

When: 2nd Friday of month, 7.30 pm, blackboard concert plus guest artist. Entry: Members \$5, Non-Members \$10, Children \$3 (includes supper) 4th Friday of month, 7.30 pm, acoustic night.

Where: Horowhenua, Scottish Society and Pipe Band hall, cnr Bartholomew Rd and Middlesex St.

Bookings: Dale Webb dalewebb@clear.net.nz

Website: www.levin-folk-music-club.org.nz Facebook: Levin Folk Music

Mainly Acoustic Music Club

When: (Mostly) every 2nd Tuesday of the month,
7.30pm Where: Mayfair Cafe, 116 Main
Street, Upper Hutt

Contact: Mary Khalil 021 02314505
mary.khalil@xtra.co.nz Club committee
email: info@mainlyacoustic.co.nz

Website: <http://mainlyacoustic.co.nz/coming-attractions/>

Morris dancing: Dave Barnes <http://www.morrisdancing.org.nz/>

Music and Poetry at the Metro

When: Second Sunday of the month, 3.00pm to
5pm

Where: Metropolitan Restaurant and Bar Lydney
Place Porirua

Cost: free

Contact: Phil McConnell:
musicandpoetryatthemetro@gmail.com Phone (04)
237 9902 or 027 786 5542
www.facebook.com/music.metrobar

Pukerua Bay Folk Club

When: 1st Thursday of month, 8 pm Where: 9 Donlin
Rd, Pukerua Bay

Contact: Murray or Julie Kilpatrick, (04) 239 9951, julmur@paradise.net.nz

Wellington Bluegrass Society

When: 3rd Friday of month, 8.00
pm Where: 54 Richmond
Street, Petone

Contact: Andrew Bicknell, (04)477 0069,
bluegrass@paradise.net.nz [http://
wellingtonbluegrass.net.nz/](http://wellingtonbluegrass.net.nz/)

Wellington Scottish Fiddle Club

When: Varies, but mostly monthly around the first Sunday

Where: Depends on who is hosting it this time! A club for learning tunes in the
traditional "by ear" style, it welcomes fiddlers of all levels.

Cost: Mostly free

Contact: Iain Matcham 04 568 8635, email iain@jumbletree.com