

The Balladeer

Monthly newsletter of Acoustic Routes, Wellington's folk music club

Acoustic  *Routes*

www.acousticroutes.org.nz

April 2018: in this issue

1. AR Anzac sing-around 'Songs of War and Peace', Roseneath School Hall, Thursday 26 April, 730 pm
2. President Murray's Musings
3. Mike Munro at the Pukerua Bay Folk Club, Julie and Murray's Home, 9 Donlin Road, Pukerua Bay, Thursday 5 April, 8 pm
4. Open Mic Upstairs at The Office, Newtown, Sunday 8 and Sunday 29 April, 530-8 pm
5. Open Mic, Plimmerton Boating Club, 66 Moana Road, Plimmerton, Thursday 12 April, 7 pm
6. AR Songwriters Gathering, Upstairs at 'The Office', Newtown, Sunday 22 April, 430 pm
7. Review, Spooky Men's Chorale, 21 March
8. Review, AR St Patrick's sing-around, 22 March
9. Balladeer music noticeboard
10. Want to perform?
11. About Acoustic Routes
12. Acoustic Routes contacts
13. Other regular folk events/contacts in the region

This newsletter can be printed out from a pdf located on the website <http://acousticroutes.org.nz/news/the-balladeer/>

1. AR Anzac sing-around 'Songs of War and Peace', Roseneath School Hall, Thursday 26 April, 730 pm

This month's concert will be a sing-around format honouring Anzac Day. Please bring along your songs, poems, or stories about war and peace to share.



Let's come together and sing to try to make this a happier and safer world for all.

Tea/coffee and biscuits will be provided. Love to have you with us, and perhaps bring a friend.

Entry: \$5 at the door (to cover venue hire)

2. President Murray's Musings



Hi all you folkies. The days are getting shorter and cooler. Autumn is upon us.

As I write this, many of you may be eating hot cross buns and Easter eggs, maybe at one of the several music festivals being held around the country. If you are, then I hope you are enjoying the food, the company and the music.

In a few weeks there will be another very lovely Trad-based festival in the Northern Hawke's Bay. Later in the year, Annie McGregor will once again be running our annual winter folkie retreat in Otaki at Riverslea. This is a really friendly, participatory event. Thanks so much Annie.

We have great support for our regular events. Thanks to Kevin, Vivian and Alan, for hosting the open mics Upstairs at 'The Office' in Newtown, and to Roy for the monthly open mic at the Plimmerton Boating Club, which just keeps on getting bigger and better.

In March, Acoustic Routes supported the Spooky Men's Chorale concert, organised by Julian Raphael, at the Wellington Salvation Amy Citadel (reviewed below). What a wonderful concert, in such an awe-inspiring venue.

This month's Acoustic Routes concert at the Roseneath School Hall will be another sing-around with the theme 'songs of war and peace'. Also this month we are holding a songwriter's workshop upstairs at 'The Office'. A number of our community's wonderfully talented songwriters have agreed to come along and share their collective wisdom. We hope this event will encourage more of you to embark on this creative journey. Thanks so much to all those talented songwriters who have so generously agreed to give us their time.

Finally, I must once again thank all the members of our hard working committee and our support team outside the committee including Philippa for once again putting

together such a wonderful Balladeer, and John Burnell, a man we don't see often, who so efficiently and graciously manages our electronic, communication technology for us. Also Janette Munneke, one of our past presidents, who so often steps into the gaps to assist us. Last but definitely not least, I would like to thank all of you for supporting Acoustic Routes. Without your support, there would be very little point in us organising events, thank you so much.

There is still room on our committee for two more members so if you would like to be part of our team, please get in touch with me. Phone (04) 239 9951 or email me at musicianmurray@gmail.com

Cheers, thanks and keep on folking.

Murray Kilpatrick

3. Mike Munro at the Pukerua Bay Folk Club, Julie and Murray's Home, 9 Donlin Road, Pukerua Bay, Thursday 5 April, 8 pm

The first half of the Pukerua Bay Folk Club evening is always a sing-around, followed by tea/coffee and Julie's very, very, very famous scones. This month, we are very lucky to have multi-talented Mike Munro as our guest performer for the second half of the evening. Mike has spent 10 years as a professional pianist, song writer and singer in many parts of the world. In all these areas, he is superb and yes, extremely professional. I can guarantee that you will be mesmerized by his songs, singing, musicianship and creativity.



Besides all this, Mike has very recently released his very first novel, which is completely captivating. You will see 'The Eye of a Song Bird' appearing in book shops near you. I would encourage you to come and hear this wonderful man.

Because we have a guest, we ask for a Koha of \$3.

We would love to have you with us, and why not bring a friend. Contact musicianmurray@gmail.com or phone (04) 239 9951.

Cheers

Murray and Julie Kilpatrick.

4. Open Mic Upstairs at 'The Office', Newtown, Sunday 8 and Sunday 29 April, 530-8 pm



Newtown Acoustic Sound Open Mics upstairs at the Office Bar in Newtown are now running twice a month, on the second and last Sundays. If you are busting to try out a new song or dust off an old favourite, this is the place to go. This month's Open Mics will be on Sunday 8 April and Sunday 29 April.

Contacts:

newtownacousticsound@gmail.com

kevin.ikin@supermail.co.nz

5. Open Mic, Plimmerton Boating Club, 66 Moana Road, Plimmerton, Thursday 12 April, 7 pm

This great night in a lovely venue, hosted by the inimitable Roy McGuinness, is now under the umbrella of Acoustic Routes. Low cost drinks and food, and a sound system.

Put this one on your calendar as a regular event. To find out more, contact Roy on (021) 433-878.



6. AR Songwriters Workshop, Upstairs at 'The Office', Newtown, Sunday 22 April, 430 pm



An opportunity for songwriters to share their expertise and for beginners to learn, maybe start writing a song.

All welcome.

Enquiries contact Murray Kilpatrick

musicianmurray@gmail.com or phone landline 239 9951

7. Review, Spooky Men's Chorale, 21 March

Julian Raphael had taken on the task of organising this concert in the spectacular Salvation Army Citadel, with support from Acoustic Routes.



Male Vocal, Julian's Wellington-based choir, started the evening with songs from around the world. I had known Julian by reputation, but had never seen him in action before. What a wonderfully musical, energetic and inclusive person. Julian led the choir mainly accompanying them on the guitar. The last two African songs were particularly captivating. A wonderful choir and an amazing leader.

We were now thoroughly prepared for the Spooky Men, who appeared from behind us singing a Georgian chant as they walked amongst us making their way to the stage. Throughout the rest of the evening, they had us on the edges of our seats not knowing quite what might be coming next. I'm afraid that I do think that they are a sort of 'Men's Group', even though they try to deny it.



I would be inclined to describe them as a truly world-class choir, crossed with Monty Python. Apparently they began their journey singing Georgian chants and have since branched out in all directions. I was particularly taken with their very powerful version of Joanie Mitchel's 'The Fiddle and the Drum'. At the beginning of the first half, they staged a sort of vocal Georgian Chant battle between a group in the balcony and the rest on the ground floor, pushing audience in front of them for protection. Then they sang a song introducing the second half, which they promised would be different from the first half ...

Amazing music and completely off-the-wall humour. A truly wonderful, unforgettable night spent with a capacity audience. Thanks so very much Spooky Men.

Murray Kilpatrick

8. Review, Acoustic Routes St Patrick's Sing-around, 22 March

It was a dark and unpleasant night outside, but an intrepid group of folkies made it to the Roseneath School Hall to be led in a wonderful evening of Irish poems, stories, tunes and songs by the inimitable Roy Mc Guinness. And what a great evening it was. Among other gems, Col Wright read us a most unlikely story and Edd Budding encouraged us to join him in some rousing jigs and reels. We witnessed our former President Janette's debut performance playing some lovely tunes on a whistle - a real dark horse. Derek delighted us with Delaney's Donkey, Kevin played and sang some wonderful up beat songs, Sue Ikin read a wonderful poem and of course we had to be nice to Roy and laugh at his many Irish Jokes.

Many thanks to Roy for putting the evening together so well and making it such fun. Thanks also to all those who came along and contributed to a wonderful celebratory evening.



Cheers

Murray Kilpatrick

9. Balladeer music noticeboard

Where you can advertise your music-related items—lessons, instruments, gigs, band members wanted, etc.

a) Trad Singing Session, Upstairs at the Sprig and Fern, Thorndon, Monday 2 April, 6:30 pm

With Dave Barnes hosting, this session celebrates unaccompanied singing in traditional style. Fine beer and food to be had at the bar. Contact: Dave Barnes david.barnes@xtra.co.nz

b) Dave M and Janet M, Up Close and Personal concert Plimmerton, Saturday 14 April, 7:30 pm



Don't miss this very special duo. Anne and Roy's home, 21 Gordon Road Plimmerton.

Contact Anne 0274699377

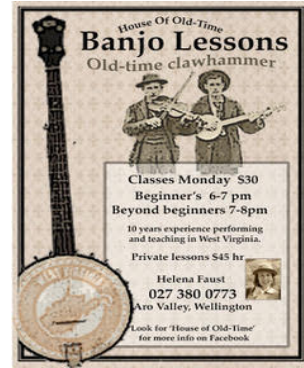
annemcgregor@xtra.co.nz

c) **Old -Time Clawhammer Banjo Lessons with Helena Faust**

Helena has 10 years of experience as a performer and teacher in West Virginia. She is offering lessons on Mondays in the Aro Valley.

- Beginners 6-7 pm
- Beyond beginners 7-8 pm

Private lessons are also available, \$45 per hr.
Contact Helena on 021 380 0773



Facebook: 'House of Old-Time'

d) **Want to review for the Balladeer?**

We have a handful of willing writers who regularly get shoulder tapped to review AR concerts and we are very grateful to them. The AR committee offers a free concert ticket to anyone who reviews a concert for the Balladeer. It is great to hear a range of voices and opinions, so if you are interested please contact Philippa balladeer@acousticroutes.org.nz

10. Want to perform?



AR Committee would like to hear from you if you are interested in performing at our events, including support acts for our monthly concerts. Contact us performers@acousticroutes.org.nz

11. About Acoustic Routes

Acoustic Routes (Wellington Folk Centre Incorporated) is a club for people who enjoy playing and listening to folk and acoustic styles of music.

The fourth Thursday of the month generally features a concert, usually with a visiting artist and support acts from amongst our membership. Check the website or the Balladeer for updates about the venue.

Membership of Acoustic Routes costs \$25 a year for individuals, \$40 for couples or families, or \$15 for students and beneficiaries – and as we're now into the second half of the financial year, all membership rates are half price to join from now until June 2017. Membership entitles you to door-charge discounts at Acoustic Routes events, at events put on by most other folk clubs, and at Alistair's Music.

Members get priority access to performance opportunities, and can have input into the club's activities. To join, email treasurer@acousticroutes.org.nz.

Acoustic Routes publishes this newsletter (The Balladeer) at the start of every month, and also an acoustic gig guide for the Wellington region (Acoustic Routes update). You can [subscribe online](#), or contact publicity@acousticroutes.org.nz

12. Acoustic Routes contacts

President: Murray Kilpatrick musicianmurray@gmail.com

Correspondence: Kevin Ikin secretary@acousticroutes.org.nz

Treasurer/Membership: Sue Ikin treasurer@acousticroutes.org.nz

Balladeer: Philippa Boy balladeer@acousticroutes.org.nz

Acoustic Routes update email: Murray Kilpatrick
musicianmurray@gmail.com

Performance opportunities: performers@acousticroutes.org.nz

Postal address: PO Box 27-191 Marion Square, Wellington, New Zealand.

Website: www.acousticroutes.org.nz

13. Other regular folk events/contacts in the region

Ceol Alba Scottish Music Club

When: 4th Friday of month, 7.30 - 9.30pm. A club for playing and/or listening to (mostly) traditional Scottish music. Sheet music supplied or downloadable.

Where: Lower Hutt.

Cost: \$5 per night

Contact: Lynne Scott, 04 565 0164 lynne@scott.gen.nz

International Folkdancing

When: Every Wednesday from February to December, 7.30 to 9.15 pm

Where: Tarrant Dance Studios, 125 Cuba St, Wellington

Contact: Cashy Yates (04) 569 1618 cashy@ihug.co.nz

Kapiti Live Music Club

When: 2nd Wednesday of the month, an acoustic social evening for listening and/or singing and playing, from 7:30.

Where: Paul and Kimbra's; 3 Jade Lane, Paraparaumu. Off the east end Mazengarb Road as it changes name and turns toward Kapiti Road.

Contact: enquiry@klmc.org.nz and <http://www.klmc.org.nz>

Kelburn Pub Live Music

When: Live music every Sunday 3-5pm.

Sunday Roots on the first Sunday of each Month, 4-7pm. Hosted by Pip Payne and featuring a different guest artist each month. Details: 'Sunday roots' on Facebook. Contact the Pub if you are interested in performing.

Levin Folk Club

When: 2nd Friday of month, 7.30 pm, blackboard concert plus guest artist. Entry: Members \$5, Non-Members \$10, Children \$3 (includes supper) 4th Friday of month, 7.30 pm, acoustic night.

Where: Horowhenua, Scottish Society and Pipe Band hall, cnr Bartholomew Rd and Middlesex St.

Bookings: Dale Webb dalewebb@clear.net.nz Website: www.levin-folk-music-club.org.nz Facebook: Levin Folk Music

Mainly Acoustic Music Club

When: (Mostly) every 2nd Tuesday of the month, 7.30pm

Where: Mayfair Cafe, 116 Main Street, Upper Hutt

Contact: Mary Khalil 021 02314505 mary.khalil@xtra.co.nz

Club committee email: info@mainlyacoustic.co.nz

Website: <http://mainlyacoustic.co.nz/coming-attractions/>

Morris dancing: Dave Barnes <http://www.morrisdancing.org.nz/>

Music and Poetry at the Metro

When: Second Sunday of the month, 3.00pm to 5pm

Where: Metropolitan Restaurant and Bar
Lydney Place Porirua

Cost: free

Contact: Phil McConnell: musicandpoetryatthemetro@gmail.com

Phone (04) 237 9902 or 027 786 5542

www.facebook.com/music.metrobar

Pukerua Bay Folk Club

When: 1st Thursday of month, 8 pm Where: 9 Donlin Rd,
Pukerua Bay

Contact: Murray or Julie Kilpatrick, (04) 239 9951, julmur@paradise.net.nz

Wellington Bluegrass Society

When: 3rd Friday of month, 8.00 pm

Where: 54 Richmond Street,
Petone

Contact: Andrew Bicknell, (04)477 0069, bluegrass@paradise.net.nz

<http://wellingtonbluegrass.net.nz/>

Wellington Scottish Fiddle Club

When: Varies, but mostly monthly around the first Sunday

Where: Depends on who is hosting it this time! A club for learning tunes in the traditional "by ear" style, it welcomes fiddlers of all levels.

Cost: Mostly free

Contact: Iain Matcham 04 568 8635, email iain@jumbletree.com